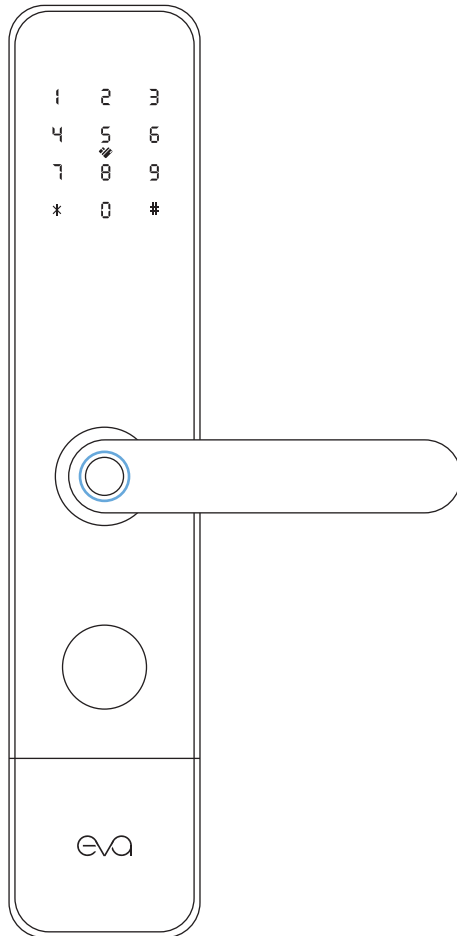




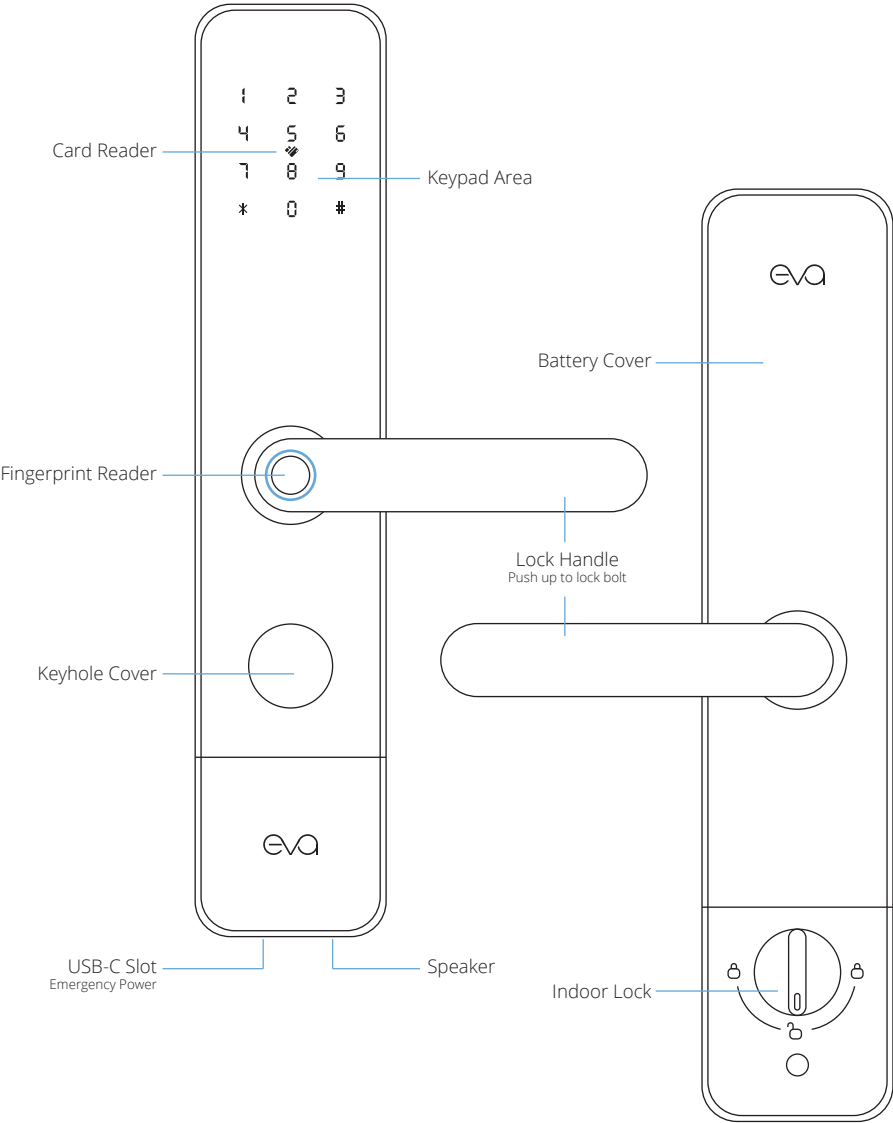
M6lite Smart Security Door Lock



User Manual

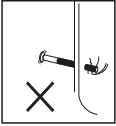
www.evasmart.co

PRODUCT OVERVIEW

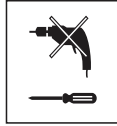


THINGS TO TAKE NOTE WHEN INSTALLING

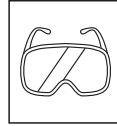
Do not use strong force when installing, avoid damaging the lock.



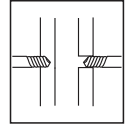
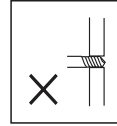
Use correct installation tools.



Wear goggles to protect your eyes from injury when drilling holes.



Drill from both sides to avoid damaging the door surface.



NOTE:

- It is always recommended to seek professional locksmith / installers to perform door lock installation.
- Please read this instruction manual before installation and operation of Eva Smart Lock.
- Pay attention to the wire connector direction and connect it correctly during installation.
- It is very important to always keep the door open and carry the physical key along throughout the installation.
- Always check if the fingerprint reader, keypad, IC card, and physical key, works normally after installation. Check for installation error if it doesn't work properly.

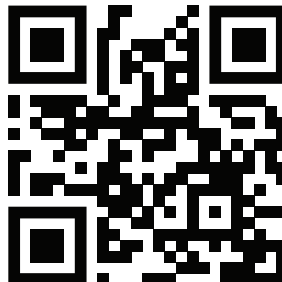
VIDEO GUIDE



LOCK INSTALLATION GUIDE



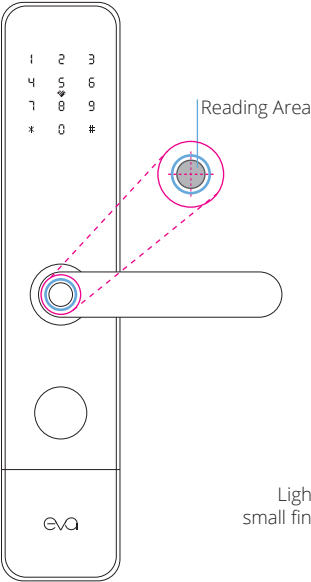
APP & LOCK OPERATION GUIDE



MORE VIDEO TUTORIALS

PROPER LOCK HANDLING GUIDE

1 FINGERPRINT UNLOCK



CORRECT WAY TO USE FINGERPRINT READER



Press firmly against the reader, large fingerprint area reading.



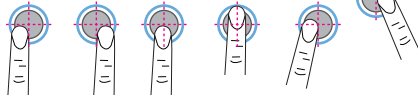
Scan at the center point of reader.



WRONG WAY TO USE FINGERPRINT READER

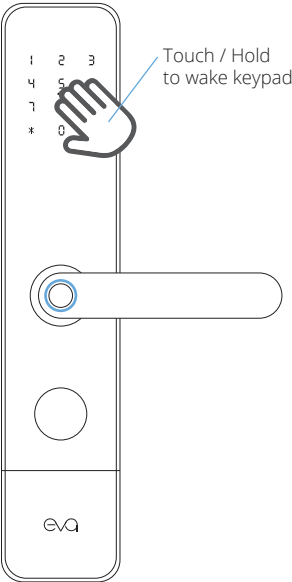


Light press / fingertip, small fingerprint area reading.



Scanning not done at center point of reader.

2 PASSWORD UNLOCK



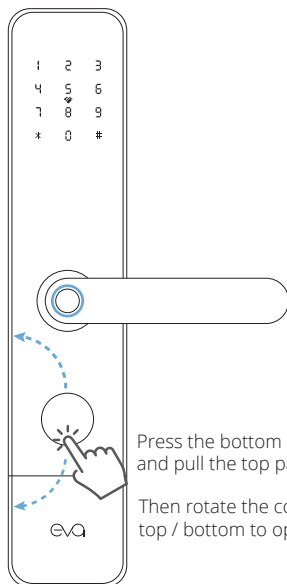
- Hold your finger / palm at the keypad area until the keypad lights up to wake up the lock.
- Key in your password followed by the # key. (# is the enter key for all lock operations)
- When password is correct, "Unlocked" voice prompt will be heard.
- Push down the handle to open the door.

Anti-peeping Password Function:

Key in random numbers before and after the actual password to unlock.
Example: 5615 [Actual password] 5348#

3 CARD UNLOCK

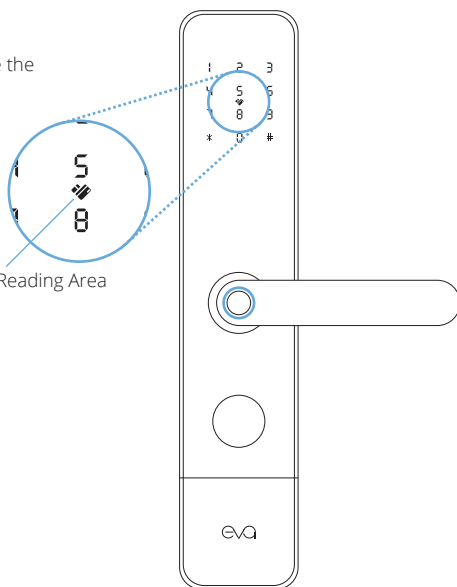
- Card reader is located at the center of keypad number 5 & 8 where the card icon is.
- Ensure to always scan your card at the card icon to unlock.
- Eva M6lite will not respond if card is placed elsewhere to scan.



Press the bottom of cover and pull the top part

Then rotate the cover top / bottom to open

Card Reading Area

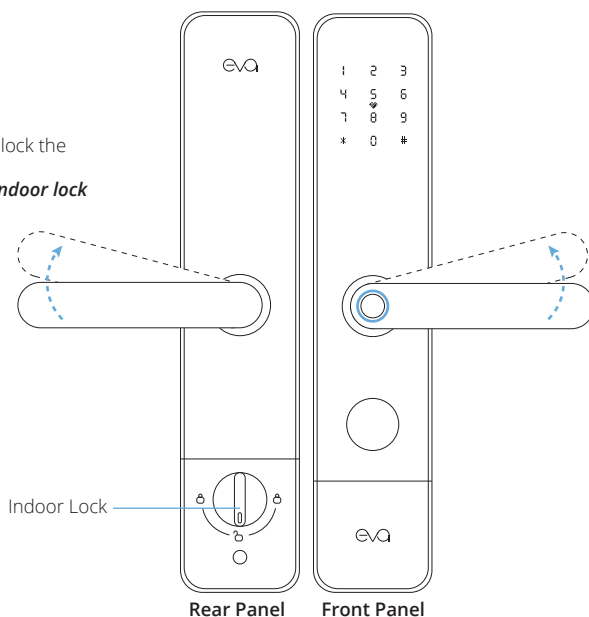


4 PHYSICAL KEY UNLOCK

- Press the bottom part of Keylock Cover with your finger to lift up the top part of the cover, then pull the cover up and rotate the cover clockwise / anti-clockwise to show the physical keyhole. Then use the physical key provided in the box to unlock.
- Power up Eva M6lite temporarily by plugging in a power bank into the Type-C port at the bottom of the lock panel. Then unlock as usual.

5 LOCKING WITH THE BOLT

- Push the lock handle up to lock the triple-bolt.
 - From the rear panel, rotate the indoor lock knob to lock the single bolt.
- NOTE: Indoor bolt can only be unlocked using the indoor lock knob.**



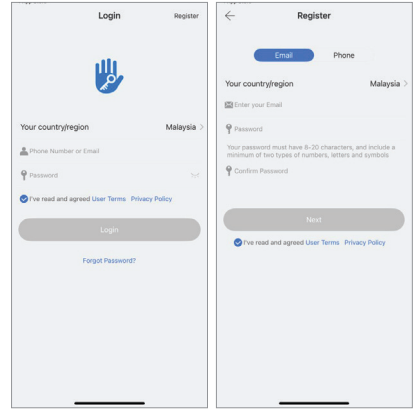
INITIAL LOCK SETUP / ADD LOCK

1 DOWNLOAD APP AND REGISTER AN ACCOUNT (FOR FIRST TIME USER)

This step is for first time user only. If you already have the app and account, please skip download step and proceed to account login.

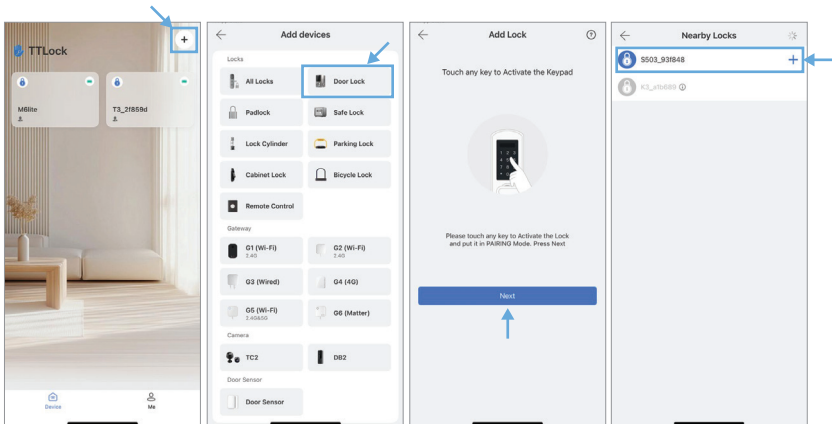


- Scan the QR Code above to download the app into your device.
- Register for a free account (first time users) or Login to your account (existing users).



2 ADD LOCK (BLUETOOTH MODE)

- **Ensure mobile device Bluetooth is turned on.**
- Tap on **+** icon at the top left corner to bring up the add device menu.
- Select **"Door Lock"**.
- Touch the lock keypad area to wake lock. **"Please add a Bluetooth administrator"** voice prompt will be heard.
- Select the corresponding lock to add.
- When successful: **"Adding administrator successful"** voice prompt will be heard.



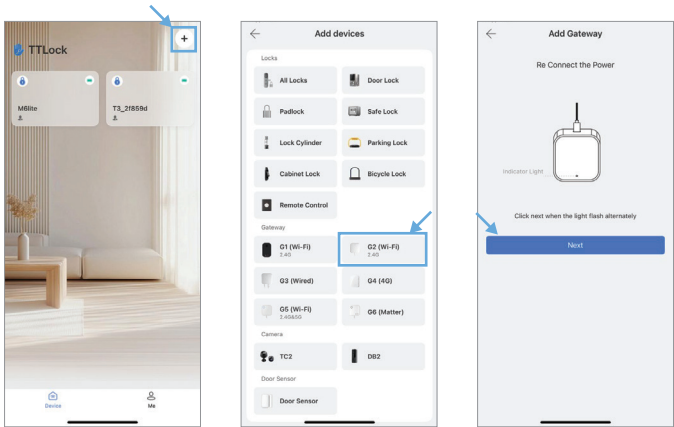
G2 GATEWAY (OPTIONAL DEVICE)

ADDING GATEWAY

- Tap on **+** icon at the top left corner to bring up the add devices menu.
- Select “G2 (Wi-Fi)”,
- Connect the USB cable to a power source and power up the gateway.
- Once the LED indicator starts flashing, press “Next”.
- Select the Wi-Fi network (2.4GHz only), and key in the correct Wi-Fi password.
- Once gateway is added, it will auto scan for nearby locks that belong to the same user account.



G2 Gateway
* USB Adaptor not included.



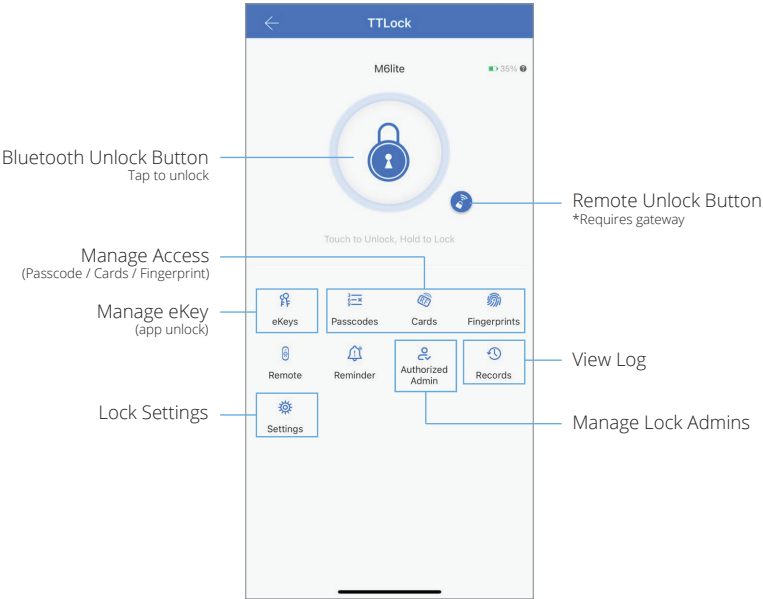
The gateway is an add-on accessory to the lock. It allows the lock to connect to the Wi-Fi network (Internet / Cloud) for users to manage full lock function remotely via the Internet / mobile data.

NOTE:

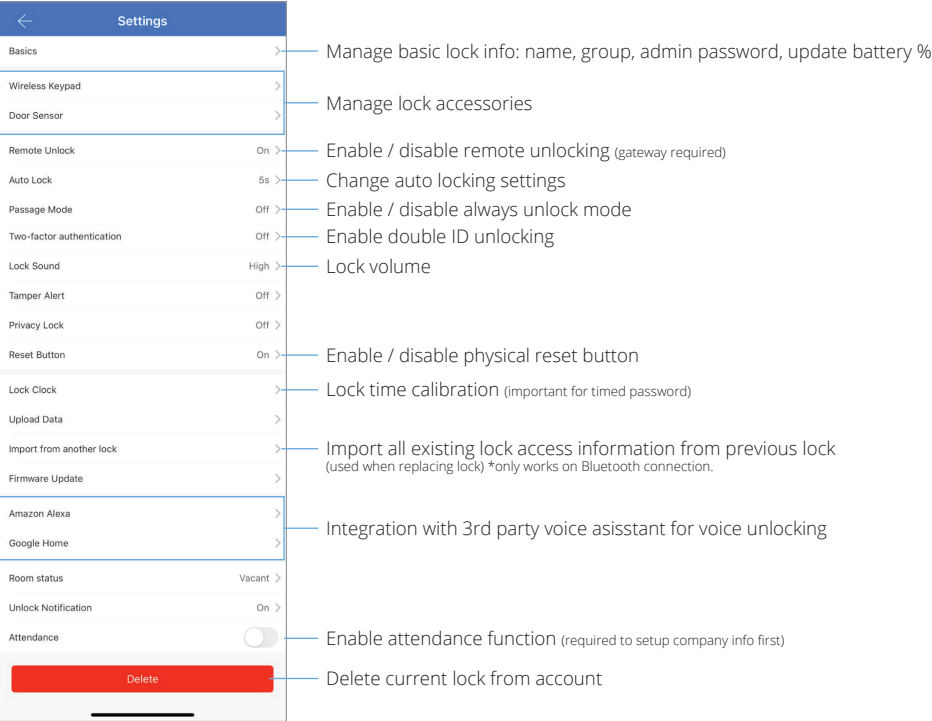
- Eva M6lite can still be used normally without gateway.
- All functions are still available and settings can be changed anytime within Bluetooth range.
- The role of gateway is just to enable users to manage the lock remotely outside of Bluetooth range from the lock.

LOCK FUNCTION	WITHOUT GATEWAY	WITH GATEWAY
Remotely generate Timed Password	✓	✓
App unlocking (Bluetooth range)	✓	✓
Set permissions (Bluetooth range)	✓	✓
Remotely modify, add, delete password / card / fingerprint	✗	✓
Remote unlocking	✗	✓
Read unlock history in real-time.	✗	✓

BASIC APP OPERATION



LOCK SETTINGS

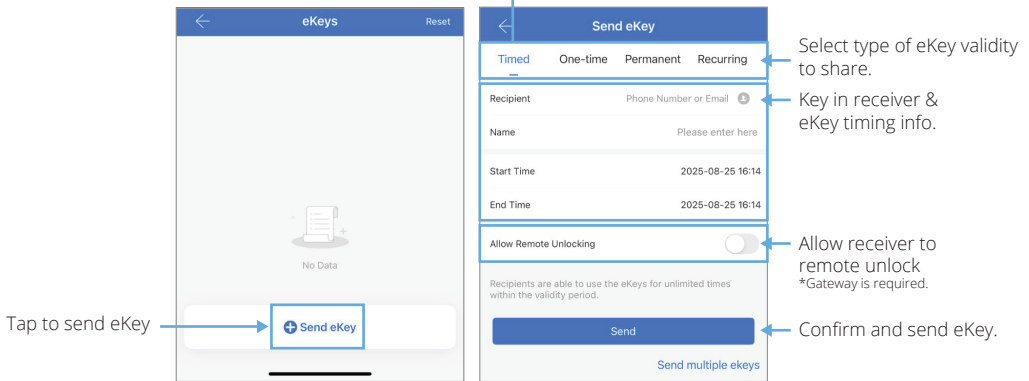


MANAGE eKEY

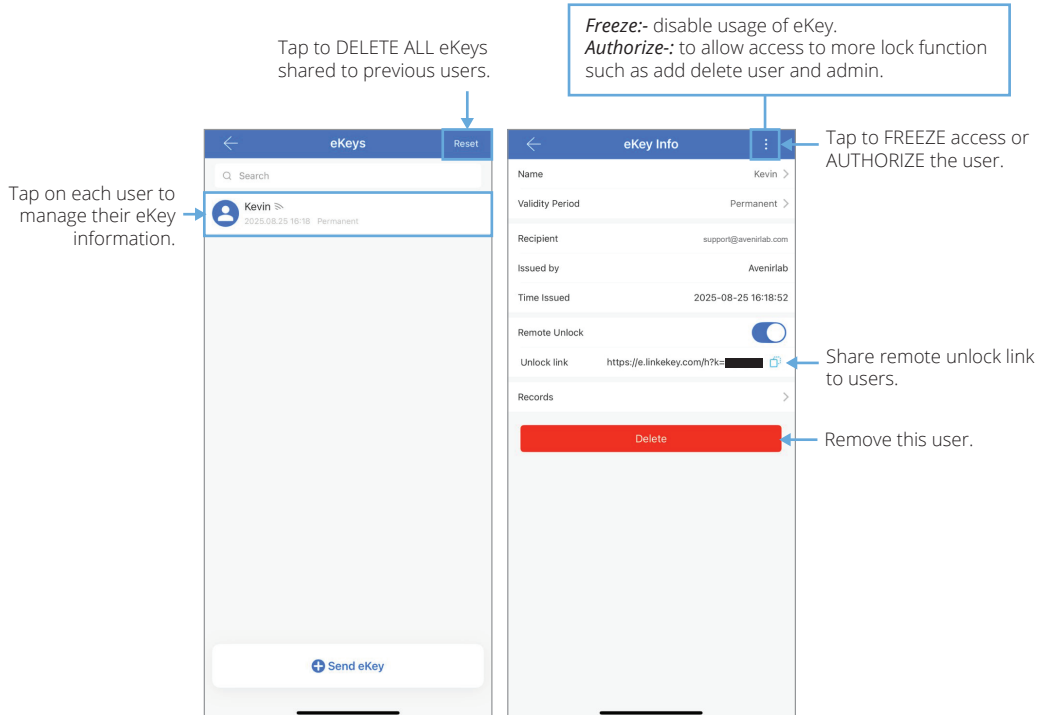
eKey is to allow users to Bluetooth Unlock via app. You can share or send the eKey to other app users. Non-registered users will be registered automatically, an SMS or email will be sent to the person with password.

- Tap on "eKeys" icon at the lock main page to manage eKeys.

Timed:- allow to use eKey from preset time A to B.
One-time:- allow to use eKey only ONCE.
Permanent:- always allow to use eKey until deleted.
Recurring:- allow to use eKey during specific time of specific day in each week.



Once eKey has been sent, shared user accounts will show up on the eKeys page.



MANAGE PASSCODE

Tap on the “Passdoe” icon to manage user passcode access.

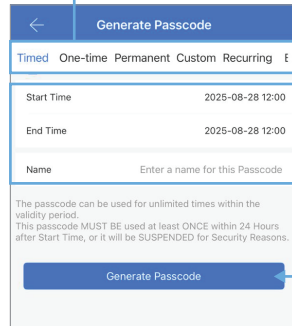
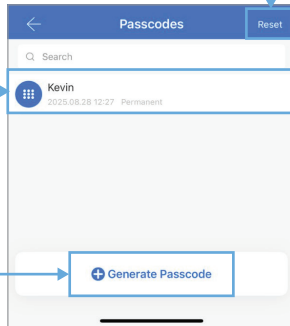


Timed:- allow to use eKey from preset time A to B.
One-time:- allow to use eKey only ONCE.
Permanent:- always allow to use eKey until deleted.
Recurring:- allow to use eKey during specific time of specific day in each week.

Tap to DELETE ALL passcodes

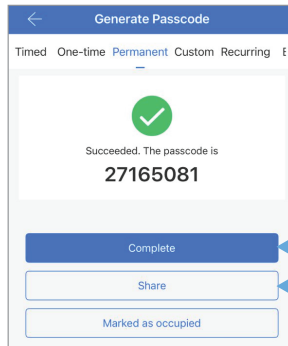
Tap on each user to manage their passcode information

Tap to create passcode information



Select type of validity
Key in user access info accordingly

Click to generate new passcode



Tap to close

Tap to share passcode

MANAGE CARDS

Tap on the “Cards” icon to manage user card access

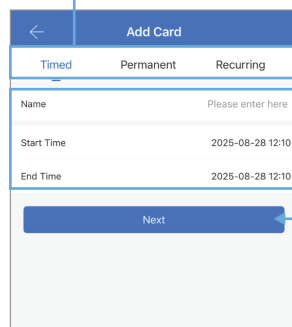
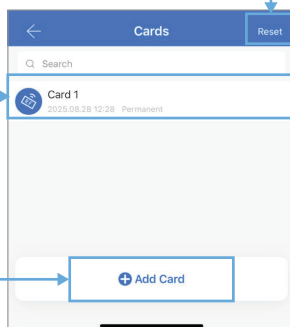


Timed:- allow to use eKey from preset time A to B.
Permanent:- always allow to use eKey until deleted.
Recurring:- allow to use eKey during specific time of specific day in each week.

Tap to DELETE ALL access cards

Tap on each user to manage their access information

Tap to add card information



Select type of validity
Key in user access info accordingly

Click to start scanning card at the card reader

MANAGE FINGERPRINTS

Tap on the “Fingerprints” icon to manage user fingerprint access.

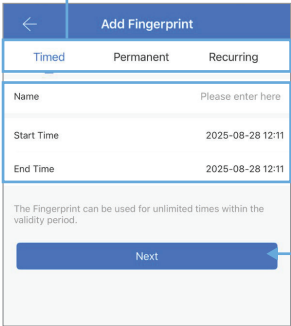
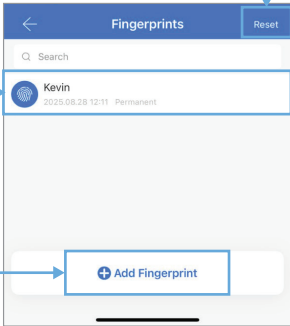


Timed:- allow to use eKey from preset time A to B.
Permanent:- always allow to use eKey until deleted.
Recurring:- allow to use eKey during specific time of specific day in each week.

Tap to DELETE ALL fingerprints

Tap on each user to manage their access information

Tap to add fingerprint information

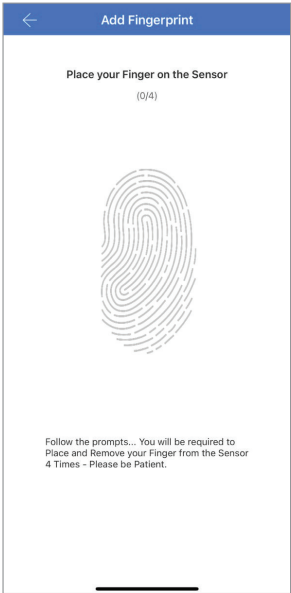
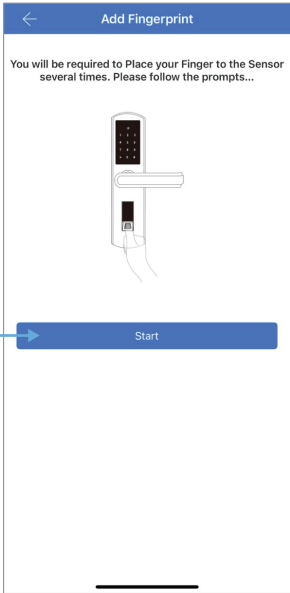


Select type of validity
 Key in user access info accordingly

Click to start scanning fingerprint at the reader

Tap “Start” and the app will connect to the lock via Bluetooth

Touch the lock keypad to wake lock if needed.



Once lock is connected, scan fingerprint on the reader 4 times to register.

eva | M6lite



User Manuals



Demo Videos



Follow us for more future updates.

www.evasmart.co