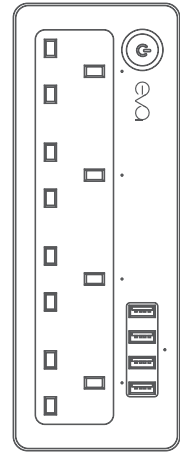


EVA

Wi-Fi Smart Extension Socket with Power Monitoring



Quick Start Guide

GETTING STARTED

1. Ensure that your smart phone is connected to 2.4GHz WiFi network at all times when performing device setup.
2. Have your 2.4GHz WiFi password with you.
3. Smart phone is running on Android 4.0 / iOS8.0 or higher.
4. Your router is set to MAC-open and have valid Internet connection.

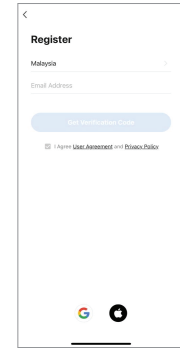
DOWNLOAD APP / REGISTER / LOGIN

1. Scan QR code below to download app.
2. For first time user, create an account and follow on-screen instructions to get verification code to complete new account registration.

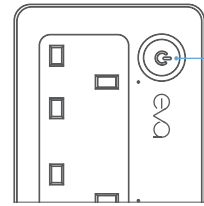
Scan QR code to download app.



Android 4.0 / iOS 8.0 and above



1



On/Off Button
Pairing Button

LED Indicator
Fast blink: EZ Mode setup (default)
Slow blink: AP Mode setup

Hold button for 5 seconds to reset / switch setup mode.

DEVICE SETUP

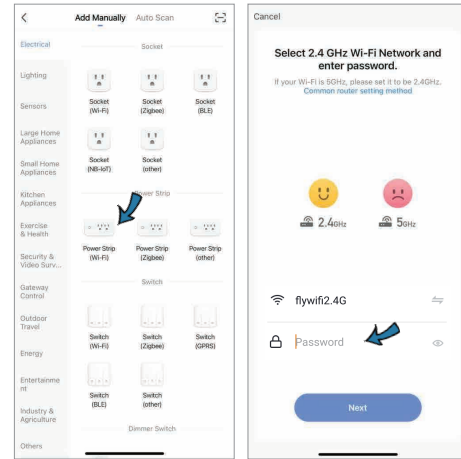
1. There are 2 modes of adding Eva Smart Extension Socket into the app.
 - EZ Mode (Default / Recommended)
 - AP Mode
2. Plug in the extension socket to a power socket and turn on the power.

EZ MODE SETUP (DEFAULT)

1. Ensure LED indicator at the power button is blinking fast (twice per second). If it is not, press and hold the power button for 5 seconds until it is blinking fast.
2. On the app main page, tap on the + icon at the top right corner.
3. At the left, tap on "Electrical" then select "Power Strip (Wi-Fi)" from the selection. At this point, ensure your phone is connected to 2.4GHz WiFi network.

2

4. Key in your 2.4GHz WiFi password manually, do not copy and paste the password.
5. Follow on-screen instructions to proceed further.
6. Once Eva Smart Extension Socket has been successfully setup, it will be added into the device list and LED indicator at the power button will turn solid.

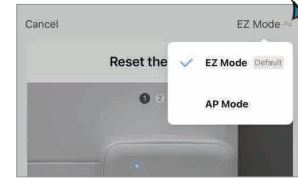


3

AP MODE SETUP

AP mode setup is recommended for Mesh WiFi home network, or WiFi network that uses the same SSID for both 2.4GHz and 5GHz network.

1. Switch Eva Smart Extension Socket to AP Mode setup.
2. Make sure the indicator light is blinking slowly (once every 3 seconds). If not, press and hold on the power button for 5 seconds to switch to AP Mode (slow blink).
3. On the app main page, tap on the + icon at the top right corner.
4. At the left, tap on "Electrical" then select "Power Strip (Wi-Fi)" from the selection.
5. At this point, ensure your phone is connected to 2.4GHz WiFi network.
6. At the top right corner, Switch app configuration to "AP Mode"

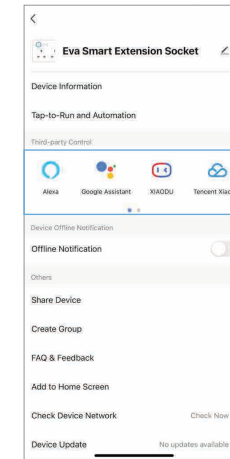


7. Follow on screen instructions to connect to device hotspot and to continue adding the device on AP mode.
8. Once Eva Smart Plug is successfully setup, it will be added into the device list and the indicator light will turn solid.

4

CONNECTING TO 3RD PARTY VOICE SERVICE

1. From the Eva Smart Extension Socket panel, tap on the (pencil) icon to open up the device information panel.
2. At "Third-party Control" section, select the desired voice control service to link.
3. Follow the on-screen instruction to proceed further.

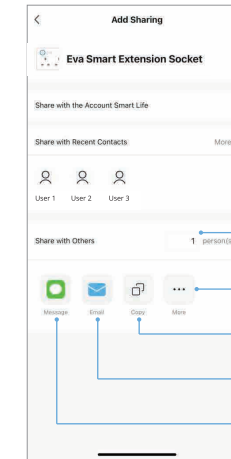


- Swipe left for more services.
- Enable to get notification if Smart Extension Socket goes offline.
- Share Smart Extension Socket with other users.
- Create a group with other devices to control simultaneously.
- Add a shortcut to this Smart Extension Socket on your phone's home screen.

5

DEVICE SHARING

1. From the Eva Smart Extension Socket panel, tap on the (pencil) icon to open up the device information panel.
2. Select "Share Device" from the selection.
3. Select "Add Sharing" button at the bottom.
4. Follow on-screen instructions to proceed further.



- Share to app account users.
- Create invite link for number of users.
- Share link via other app.
- Copy invite link.
- Share invite link via email.
- Share invite link via SMS.

6

HOME AUTOMATION FUNCTION

Eva Smart Plug can be automated alongside with other smart devices that bears the marking "Powered by Tuya" / devices that works with "Smart Life" or "Tuya Smart" app.

- Devices are required to be added into the same app to work.



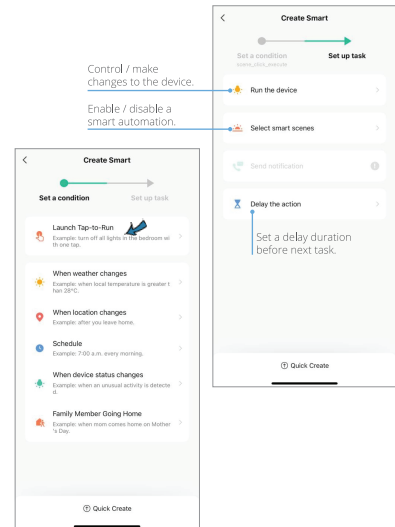
There are mainly 2 types of automation:

1. Tap-to-Run
 - Used for creating a "scene" or a shortcut button.
 - A series of continuous action with the tap of a button.
 - Can be used to execute actions from different devices.
2. Automation (Smart)
 - Actions that run automatically when a pre-defined condition is met.
 - Such as:
 - Timer / Schedule
 - Location changes
 - Device status changes
 - Weather changes

7

TAP-TO-RUN AUTOMATION

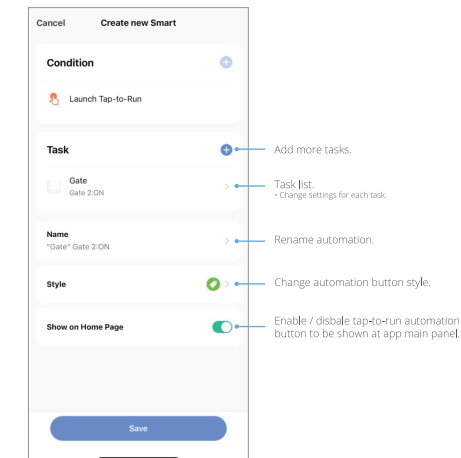
1. At the app main panel, select "Smart" at the bottom of the panel.
2. Select the + icon on the upper right corner to add new automation.
3. Select "Launch Tap-to-Run" to setup the automation.



- Control / make changes to the device.
- Enable / disable a smart automation.
- Add more tasks.
- Task list. Change settings for each task.
- Rename automation.
- Change automation button style.
- Enable / disable tap-to-run automation button to be shown at app main panel.

8

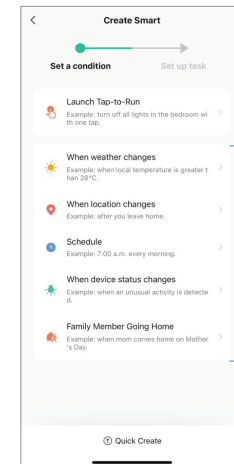
4. Plan your task and choose the desired function / method to run your automation.
5. Button will appear on automation panel once it is saved.



9

AUTOMATION (SMART)

1. At the app main panel, select "Smart" at the bottom of the panel.
2. Select the + icon on the upper right corner to add new automation.
3. Select any smart automation task method to setup the automation.
4. Follow on-screen instructions to continue the setup.



Smart automation tasks.

10

FAQ AND TROUBLESHOOTING

1. **What can I control with Eva Smart Extension Socket? It says offline.**
 - You can basically plug in any appliances into Eva Smart Extension Socket to turn it on or off wirelessly. Please make sure the appliances you plug in does not overload the smart plug.
2. **Why can't I turn on/off Eva Smart Extension Socket? It says offline.**
 - Ensure your home WiFi network is stable.
 - Ensure the wall socket where you plugged in Eva Smart Extension Socket is turned on.
3. **What should I do when adding device process has failed?**
 - Check if Eva Smart Extension Socket is turned on.
 - Check if your smart phone is connected to the 2.4GHz WiFi network.
 - Ensure your WiFi password entered in the app during adding device procedure is correct.
 - Key in your WiFi password instead of copy and paste.
 - Ensure Eva Smart Extension socket is in ready state for app configuration.
 - Indicator fast blink (twice per second) - EZ Mode
 - Indicator slow blink (once every 3 seconds) - AP Mode
 - If not, hold the button for 5 seconds until indicator starts blinking.
 - Check your internet connection, make sure router and internet is working properly.
 - If you're using Mesh WiFi, we recommend you adding Eva Smart Extension Socket using AP Mode.

11

- Ensure router's broadcasting mode is enabled.
- Ensure router's encryption mode is set to WPA2-PSK and authorization mode is AES, or set both to Auto.
- Check if WiFi signal is strong enough at the Eva Smart Extension Socket location. If weak, relocate Eva Smart Extension Socket to within router's WiFi range.
- Check whether your router has reached maximum number of devices (usually max 30 devices). Disconnect some device WiFi connection and try again.
- Check if router's wireless MAC filtering function is enabled. Remove the device from filter list and make sure the router is not prohibiting Eva Smart Plug from connecting.

4. **Can I control Eva Smart Extension Socket using my mobile 3G/4G network?**
 - After first time setup / added into app, you can remotely access and control Eva Smart Extension Socket using 3G/4G mobile network from your phone.



Scan QR for more in-depth tutorials.

12



Scan QR to view demo videos.



For more info, please visit:
www.evasmart.co