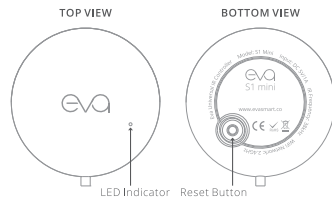


QUICK START GUIDE

www.evasmart.co



SPECIFICATION:

Model: Eva S1 Mini
 Input: DC 5V / 1A
 IR Frequency: 38KHz
 IR Range: ≤ 10 meters
 WiFi Network: 2.4GHz
 Size: ø 40 x 14mm
 Cable Length: 1.5 meters

PRODUCT HIGHLIGHTS:

- Control all your IR appliances from your phone app, anytime, anywhere.
- Add remote from over 1,000,000 branded preset remote from the cloud library.
- Supports voice control from 3rd party AI Smart Speakers (Amazon Alexa, Google Home, Tmall Genie, etc)
- Timer function.
- Scene automation.
- GPS location automation.
- Works with other Eva, TuyaSmart, and SmartLife devices.

1

GETTING STARTED

- Make sure to connect your phone to 2.4GHz WiFi network.
- Have your 2.4GHz WiFi password with you.
- Smartphone or tablet is running on iOS 8.0 / Android 4.0 or higher.
- Your router security is set to MAC-open, WPA2 / WEP.

DEVICE SETUP

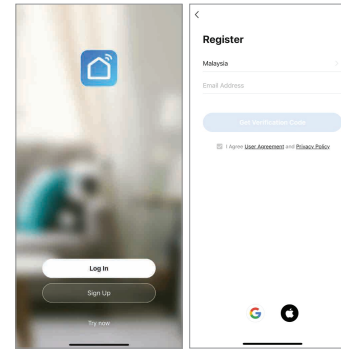
Scan the QR code to download the app.



2

ACCOUNT REGISTRATION / LOGIN

For first time user, create an account and follow on-screen instructions to get verification code to complete your new account registration.



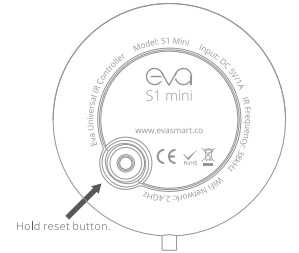
POWER UP AND PREPARE YOUR DEVICE

- Power up the device using the USB adaptor provided.
- If LED indicator is not "blinking fast", hold the reset button (about 5 seconds) until LED indicator is "blinking fast"

3

CONNECT TO 2.4GHz WIFI NETWORK

Double check if your smart phone / tablet is connected to your 2.4GHz WiFi network and connect it to 2.4GHz WiFi network if it's not connected.



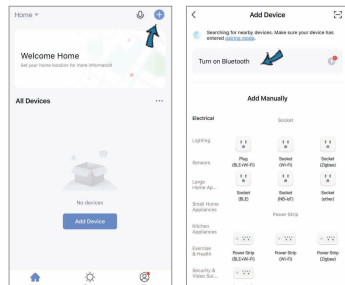
4

ADD DEVICE

A. Bluetooth Search (Default)

- At the "Home" page, touch the + icon on the upper right corner to choose the device to add.
- You will be prompted to turn on your Bluetooth if your Bluetooth is not turned on. Go to your phone settings and turn ON Bluetooth.
- It will then auto discover. Tap on "Add" button.
- Connect your phone to **2.4GHz WiFi Network**.
- Key in your WiFi password. **Do not copy paste the password.**
- Follow on-screen instructions to add the device.

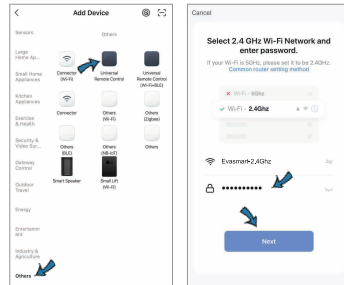
A. Bluetooth Search (Default)



ADD DEVICE

B. EZ Mode

- At the "Home" page, touch the + icon on the upper right corner to choose the device to add.
- Navigate to "Others" at the side bar.
- Choose "Universal Remote Controller" from the list.
- Key in your WiFi password. **Do not copy paste the password.**
- Follow on-screen instructions to add the device.



6

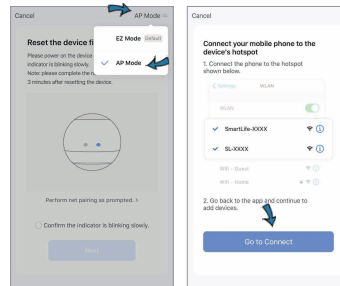
C. AP Mode

If you have trouble adding the device using EZ Mode, try switching to AP Mode.

- On the device, hold reset button (about 8 seconds) until LED indicator "blinking slowly"
- On the app, key in your WiFi password and go to next page. (Do not copy and paste your WiFi password)
- Switch to "AP Mode" from the upper right corner.

5

- Then connect your phone / tablet to the device hotspot "SmartLife-XXXX" as per instruction.
- Return to the app to complete adding the device.

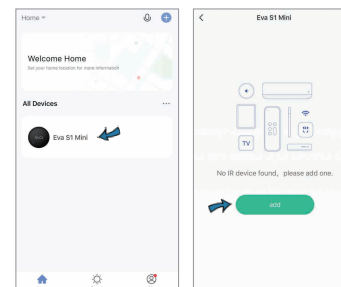


7

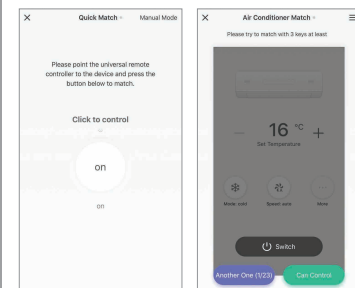
ADDING REMOTE CONTROL FOR IR APPLIANCES

- After adding the device, it will show up on home page. Select the device and tap on "Add" button.
- Then choose the type and brand of the appliance you would like to setup from the cloud library.
- There are 2 ways to match your IR remote:
 - Quick Match
 - Manual Mode
- Please make sure to test at least 3 buttons and check if IR appliance you want to match responds properly.

***Make sure the IR appliance you are trying to match is turned ON, and in the same room as Eva S1 Mini.**



8



Quick Match:

Tap on the button in the middle and check if your IR appliance you want to match responds to it.

Follow on-screen instructions.

Make sure Eva S1 Mini is in the same room with the IR appliance.

Manual Mode:

Tap on at least 3 buttons on the app remote and check if the IR appliance responds to the corresponding button.

If it doesn't, tap on the "Another One" button. To try another remote. (The number at the back represents the number of remote)

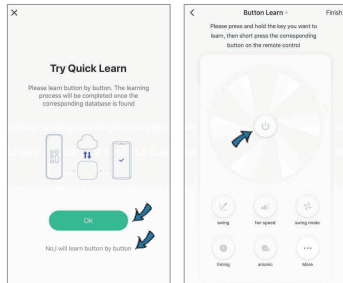
Tap on "Can Control" once a working remote is found.

9

DIY REMOTE (SELF-LEARN / SELF-PROGRAM)

If the IR appliance brand / remote model is not found in the cloud library list, use "DIY" to self-learn each button from your physical remote.

1. Tap "add" button from Eva S1 Mini main page.
2. Scroll down, select "DIY", and choose the type of appliance / remote.
3. You can DIY with 2 different methods:
 - **Quick Learn:** Auto matches your remote code with all available remote in the cloud.
 - **Button-by-button:** Learn each button on your physical remote manually.



Quick Learn
Point the remote to Eva S1 Mini and press any 3 buttons to search for a matching remote from the cloud library.

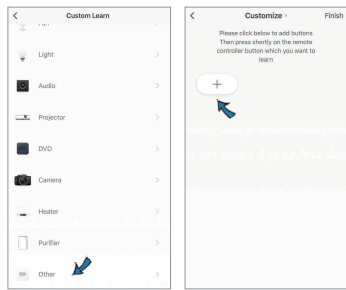
10

Manual Learn
Hold on the app button to activate learning sequence, then press on the corresponding physical remote button.

DIY REMOTE (CUSTOM REMOTE)

Any IR remote that is not stated in the category list can also be learned / programmed into the device.

1. Tap "add" button from Eva S1 Mini main page.
2. Scroll down, select "DIY", then scroll down and choose "Other" remote type.
3. Tap on the "+" button to start learning a button from the physical remote.



• Take note that "DIY - Custom" remote is not recognized by 3rd Party Voice Assistant Services.

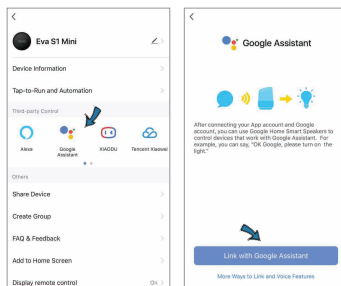
• However, a "tap-to-run" automation can be created for any "DIY-Custom" remote button and it can be executed by 3rd Party Voice Assistant as a "Scene"

11

LINKING TO 3RD PARTY VOICE ASSISTANT

This device supports 3rd Party Voice Assistant Services. To enable it, please link your account to the 3rd party account via below steps.

1. At the device main page, select the icon on the upper right corner.
2. On "Third-party Control" tab, you will see various Voice Assistant service. Choose your preferred service, and follow on-screen instruction to bind account.



Binding with Tmall Genie 天猫精灵

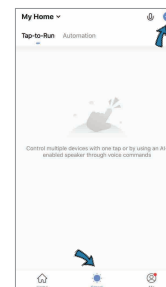
• Tmall Genie service is only available for Mainland China account running on Tuya Smart app.

• If you have a Tuya Smart account registered under Mainland China, you can bind with Tmall Genie account by searching for "涂鸦智能" in the Tmall Genie app.

12

HOME AUTOMATION & SCENE FUNCTION

You can automate this device together with other devices that has the "Powered by Tuya" icon or devices that works with Tuya Smart & Smart Life app. • All devices has to be added into the same app.



1. At the home page, select "Smart" at the bottom bar, then select the icon on the upper right corner to setup a new automation task.

There are 2 main types of automation task:

1. Tap-to-Run
2. Automation

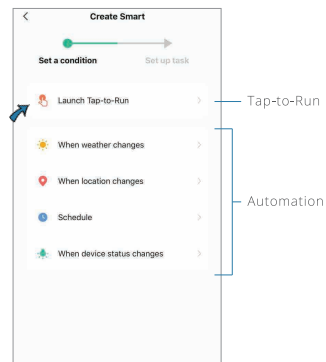
13

TAP-TO-RUN

Tap-to-run is used to create a scene that runs a series of actions with a tap of a button. This function can then be detected by 3rd party smart speaker to run using voice command.

eg: "Alexa, I'm home" will then turn on the lights, TV, close the curtain, etc..

Select "Launch Tap-to-Run" to set your tasks.

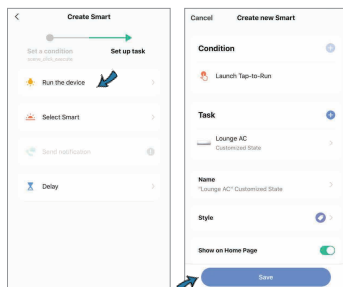


14

Run the device:- This option is to add a device to the task list to run.

Select Smart:- This option is to choose whether to enable or disable an automation and add into the task.

Delay:- Add delay before, after, or between actions into task.



Select "Save" once you have done adding and arranging tasks in order.

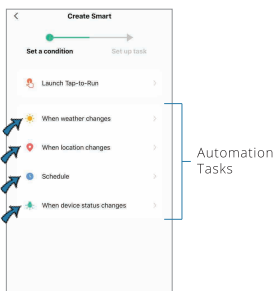


Scan QR code to watch demo videos.

15

AUTOMATION

Unlike "Tap-to-run", Automation tasks will run automatically when a defined condition is met.



When weather changes:- Triggers defined tasks when certain weather condition is met including sunset/sunrise.

When location changes:- Triggers defined tasks when arriving/leaving a pre-defined location.

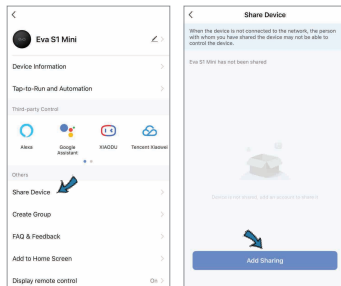
Schedule:- Timer task.

When device status changes:- Detects status of other devices and trigger tasks automatically.

16

DEVICE SHARING

Users can share device with another user from the device settings as below.



1. At the device main page, select the icon on the upper right corner.
2. Then select "Share Device".
3. At Device Sharing page, select "Add Sharing".
4. Then choose the option you prefer to share.
 - Share to another Smart Life account.
 - Share link via SMS.
 - Share link via Email.
 - Copy invitation link.

17

FAQ & TROUBLESHOOTING

What appliances can I control with Eva S1 Mini?
• You can control TV, Astro, Aircond, Apple TV, Fan, Projector, Sound bar, any 38KHz IR remote appliances.

I have trouble adding my Eva S1 Mini, what should I do next?

- Make sure the micro USB connector is plugged in properly and powered on.
- Make sure your phone is connected to 2.4GHz WiFi network, and not 5GHz WiFi network.
- Make sure you key in your WiFi password, not copy & paste into the blanks.
- Make sure the device is reset and blue LED is blinking fast.
- Make sure your router is working properly.
- Check your router security settings, make sure authentication mode is set to WEP or WPA2.
- Check all the above and restart adding process from Home Page.

Can I control my appliances outside of my home?

• Yes, you can control your appliances using your mobile phone's 3G/4G network data connection.

Can I control appliances in other room?

- IR signal cannot penetrate through walls and can only be used to control IR appliances within the same room as Eva S1 Mini.
- If you would like to control the appliances in other rooms, you need to add-on Eva S1 Mini in other rooms as well.

I can't seem to program my remote into the device/app.

• Only IR remote can be programmed using DIY function.

18

• To check if your electrical appliance remote is an IR remote, cover the front of your remote with your palm and then press on any button to see if the appliance responds. If it doesn't, it means that it is not an IR remote controller.

Why is my electrical appliance not responding to Eva S1 Mini?

- Make sure Eva S1 Mini is connected to the WiFi network and have a good connection.
- Check if the blue light is flashing repeatedly. If it does, it means that WiFi network is not connected.
- Press any button on the app remote and check whether blue LED flashes when app button is pressed. If it does, it means that Eva S1 Mini is actually sending signal.
- Check if your electrical appliance's main switch is powered on.
- Check if there is no object blocking between Eva S1 Mini and the electrical appliance that you want to control. IR signals cannot penetrate through objects and walls.



Scan for more in-depth tutorials.



www.evasmart.co

19