

EVA

Wi-Fi Smart Extension Socket

Dual QC and PD Fast Charging



GETTING STARTED

1. Ensure that your smart phone is connected to 2.4GHz WiFi network at all times when performing device setup.
2. Have your 2.4GHz WiFi password with you.
3. Smart phone is running on Android 4.0 / IOS8.0 or higher.
4. Your router is set to MAC-open and have valid Internet connection.

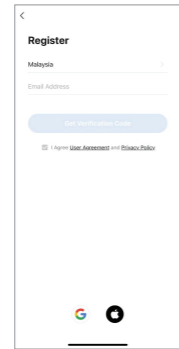
DOWNLOAD APP / REGISTER / LOGIN

1. Scan QR code below to download app.
2. For first time user, create an account and follow on-screen instructions to get verification code to complete new account registration.

Scan QR code to download app.



Android 4.0 / IOS 8.0 and above



1



On/Off Button
Pairing Button

LED Indicator
Fast blink: Auto Search / EZ Mode setup (default)
Slow blink: AP Mode setup

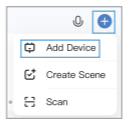
Hold button for 5 seconds to reset / change setup mode.

DEVICE SETUP

1. There are 3 modes of adding Eva Smart Extension Socket into the app.
 - Bluetooth Auto Search (Default)
 - Blink Quickly (EZ Mode)
 - Blink Slowly (AP Mode)
2. Plug in the extension socket to a power socket and turn on the power.

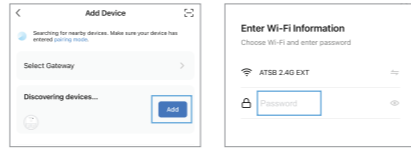
BLUETOOTH AUTO SEARCH (DEFAULT)

1. This method is suitable for both Mesh and non-Mesh Wi-Fi.
2. Turn on Bluetooth on your phone.
3. Ensure LED indicator at the power button is blinking fast (twice per second). If it is not, press and hold the power button for 5 seconds until it is blinking fast.
4. On the app main page, tap on the **+** icon at the top right corner and select "Add Device".



2

4. Tap on "Add" button under the "Discovering devices..." bubble once the device is detected.

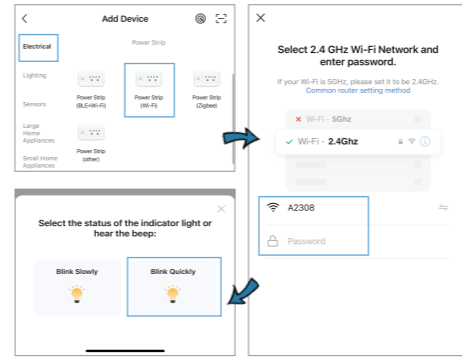


5. Key in the Wi-Fi password and tap "Next".
6. Follow on-screen instructions to proceed further.
7. Once Eva Smart Extension Socket has been successfully setup, it will be added into the device list and LED indicator at the power button will turn solid.

EZ MODE SETUP (QUICK BLINK)

1. Ensure LED indicator at the power button is blinking fast (twice per second). If it is not, press and hold the power button for 5 seconds until it is blinking fast.
2. On the app main page, tap on the **+** icon at the top right corner, select "Add Device".
3. At the left, tap on "Electrical" then select "Power Strip (Wi-Fi)".
4. At this point, ensure your phone is connected to 2.4GHz WiFi network.
5. Key in your 2.4GHz WiFi password manually, do not copy and paste the password.
6. Then select "Blink Quickly".
7. Once Eva Smart Extension Socket has been successfully setup, it will be added into the device list and LED indicator at the power button will turn solid.

3



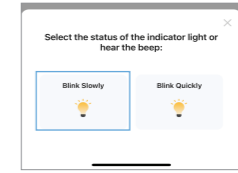
AP MODE SETUP (SLOW BLINK)

AP mode setup is recommended for Mesh WiFi home network, or WiFi network that uses the same SSID for both 2.4GHz and 5GHz network.

1. Switch Eva Smart Extension Socket to AP Mode setup.
2. Make sure the indicator light is blinking slowly (once every 3 seconds). If not, press and hold on the power button for 5 seconds to switch to AP Mode (slow blink).
3. On the app main page, tap on the **+** icon at the top right corner, select "Add Device".
4. At the left, tap on "Electrical" then select "Power Strip (Wi-Fi)".
5. At this point, ensure your phone is connected to 2.4GHz WiFi network.

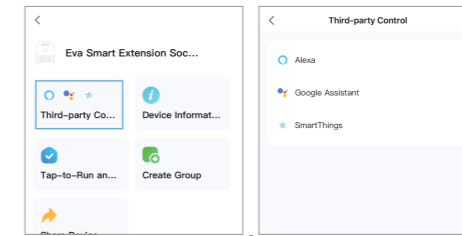
4

6. Select "Blink Slowly" from the selection.
7. Once Eva Smart Plug is successfully setup, it will be added into the device list and the indicator light will turn solid.



CONNECTING TO 3RD PARTY VOICE SERVICE

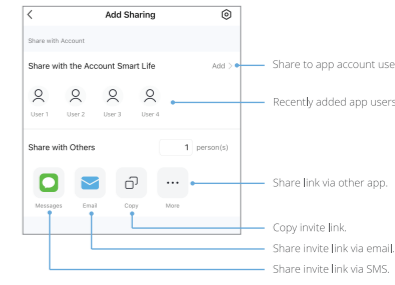
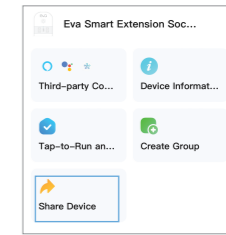
1. From the Eva Smart Extension Socket panel, tap on the **✎** (pencil) icon to open up the device information panel.
2. Tap on "Third-party Control", then select the desired voice service to link.
3. Follow the on-screen instruction to proceed further.



5

DEVICE SHARING

1. From the Eva Smart Extension Socket panel, tap on the **✎** (pencil) icon to open up the device information panel.
2. Select "Share Device" from the selection.
3. Follow on-screen instructions to proceed further.



6



Scan QR to view demo videos.



Follow us for more future updates.



For more info, please visit: www.evasmart.co

7

HOME AUTOMATION FUNCTION

Eva Smart Plug can be automated alongside with other smart devices that bears the marking "Powered by Tuya" / devices that works with "Smart Life" or "Tuya Smart" app.

- Devices are required to be added into the same app to work.

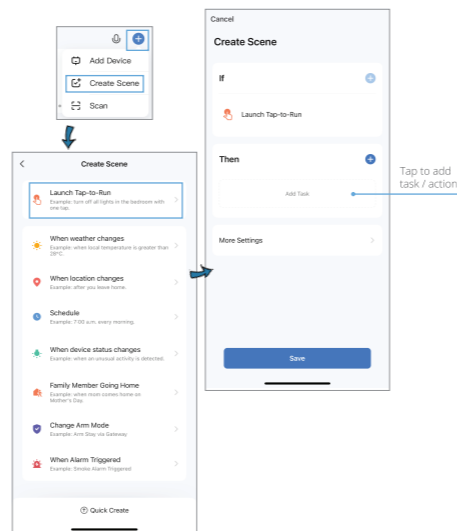


There are mainly 2 types of automation:

1. Tap-to-Run
 - Used for creating a "scene" or a shortcut button.
 - A series of continuous action with the tap of a button.
 - Can be used to execute actions from different devices.
2. Automation
 - Actions that run automatically when a pre-defined condition is met.
 - Such as:
 - Timer / Schedule
 - Location changes
 - Device status changes
 - Weather changes

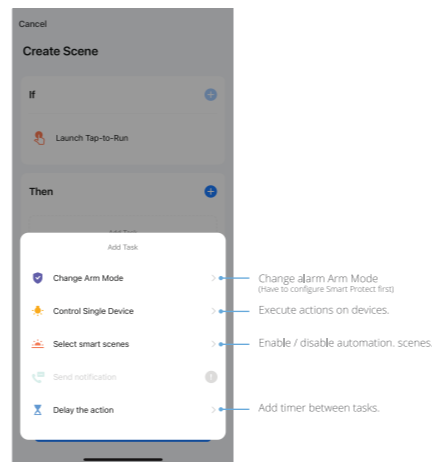
TAP-TO-RUN AUTOMATION

1. At the app main page, tap on the **+** icon at the top right corner and select "Create Scene".
2. Select "Launch Tap-to-Run" to setup the automation.
3. Tap on "Add Task" or **+** icon and select a task to add.



8

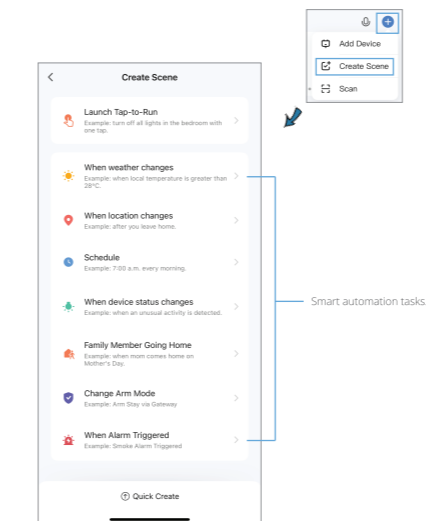
4. Plan your task and choose the desired function / method to run your automation.
5. Button will appear on automation panel once it is saved.



9

AUTOMATION

1. At the app main page, tap on the **+** icon at the top right corner and select "Create Scene".
2. Select any of the automation tasks to setup. Follow on-screen instructions to continue the setup.



10

FAQ AND TROUBLESHOOTING

1. **What can I control with Eva Smart Extension Socket?**
 - You can basically plug in any appliances into Eva Smart Extension Socket to turn it on or off wirelessly.
 - Please make sure the appliances you plug in is within the maximum load stated on the package.
2. **Why can't I turn on/off Eva Smart Extension Socket? It says offline.**
 - Ensure your home WiFi network is stable.
 - Ensure the wall socket where you plugged in Eva Smart Extension Socket is turned on.
3. **What should I do when adding device process has failed?**
 - Check if Eva Smart Extension Socket is turned on.
 - Check if your smart phone is connected to the 2.4GHz WiFi network.
 - Ensure your WiFi password entered in the app during adding device procedure is correct.
 - Key in your WiFi password instead of copy and paste.
 - Ensure Eva Smart Extension socket is in ready state for app configuration.
 - Indicator fast blink (twice per second) - BT / EZ Mode
 - Indicator slow blink (once every 3 seconds) - AP Mode
 - If not, hold the button for 5 seconds until indicator starts blinking.
 - Check your internet connection, make sure router and internet is working properly.
 - If you're using Mesh WiFi, we recommend you adding Eva Smart Extension Socket using Bluetooth or AP Mode.

11

- Ensure router's broadcasting mode is enabled.
- Ensure router's encryption mode is set to WPA2-PSK and authorization mode is AES, or set both to Auto.
- Check if WiFi signal is strong enough at the Eva Smart Extension Socket location. If weak, relocate Eva Smart Extension Socket to within router's WiFi range.
- Check whether your router has reached maximum number of devices (usually max 25 - 30 devices). Disconnect some device WiFi connection and try again.
- Check if router's wireless MAC filtering function is enabled. Remove the device from filter list and make sure the router is not prohibiting Eva Smart Plug from connecting.

4. **Can I control Eva Smart Extension Socket using my mobile 3G/4G network?**
 - After first time setup / added into app, you can remotely access and control Eva Smart Extension Socket using 3G/4G mobile network from your phone.



Scan QR for more in-depth tutorials.

12