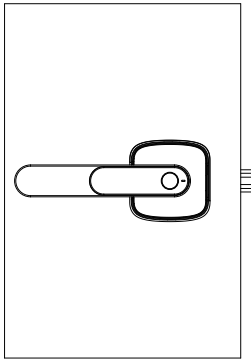


EVA | H1 USER MANUAL

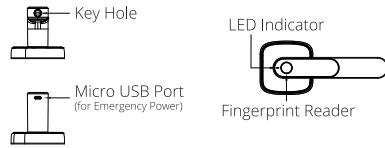
Contents

EVA | H1

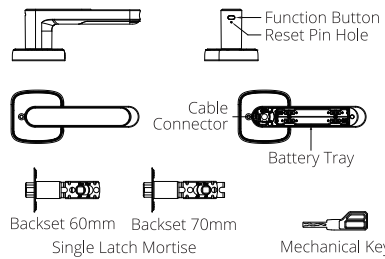


Please read and understand this manual carefully before installation and operating the lock.

Front Handle

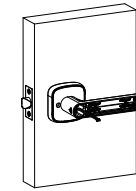
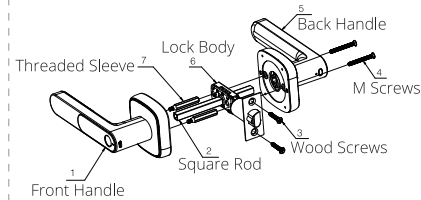


Back Handle

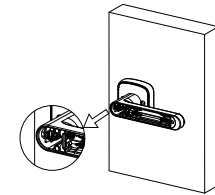


Packing List

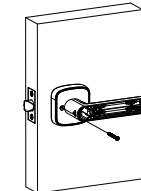
No	Item	Quantity
1	Front Handle	1
2	Back Handle	1
3	Accessories Pack	1
4	User Manual	1
5	Drill Template	1
6	Lock Body	1
7	Mechanical Key	2



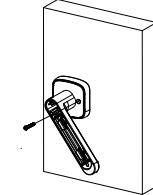
7. Thread the wire through the shaft into the Back Handle and out.



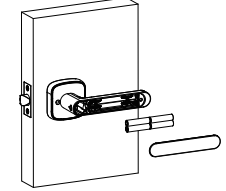
8. Connect the wire into the connector at the inner side of the Back Handle. Make sure the connector is connected correctly.



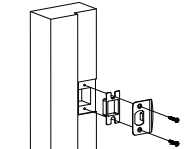
9. Using the screw provided, tighten the screw on the outer part of the handle first to fix both handles.



10. Then push the handle downwards and tighten the other screw.

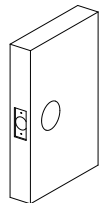


10. Power up the door lock with 4pcs of 1.5V AAA Batteries, and put on the Back Handle Cover.

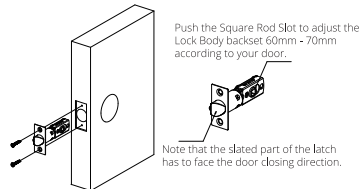


10. Install the Strike Plate and Strike Box provided onto the door frame, and tighten with screws.

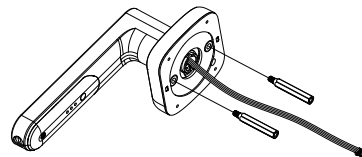
Lock Installation



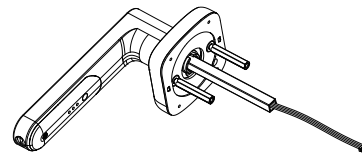
1. Using the drill template provided, drill and carve required holes on the door accordingly.



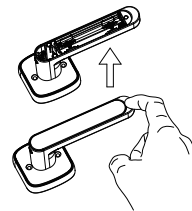
2. Insert the Latch Lock into the door from the side hole, then fix the lock into place with screws.



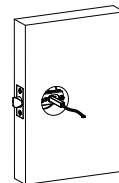
3. Tighten 2pcs of Threaded Sleeve provided onto the back part of the Front Handle.



4. Thread the wire through the square rod, and fix the square rod into the slot.



5. Open the Back Handle Plate from the end side as shown above.



6. Thread the Square Rod with Wire through the square rod slot on the Lock Body.

Lock Basics

Emergency Power

Front Handle

In the case of low power / flat battery, it is possible to power up the lock temporarily to unlock. Connect a power bank to the Micro USB interface located at the side of the Front Handle.

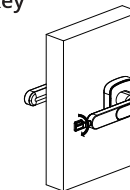
Restore Factory Settings

Back Handle

This action will completely erase all user information from the memory!

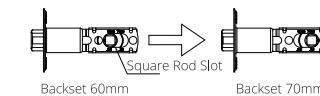
Use a needle / pin to hold the reset button with the power on, continue to hold after the voice prompt until the lock is restored to factory settings.

Backup Key



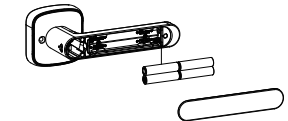
Insert the backup key into the keyhole located at the top of the Front Handle and turn 90° to unlock.

Adjusting Backset



The backset of Lock Body is adjustable from 60-70mm. Adjust the backset according to your existing door opening by pushing the square rod slot accordingly.

Battery



Do not use batteries with different charge. Make sure to always swap all 4pcs of batteries with a new set.

Download Smart App

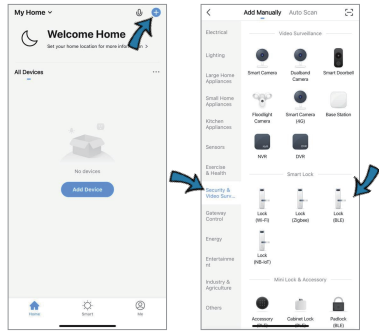
Scan the QR code below to download smart app for Eva H1.



For first time app user, please register an account to continue.

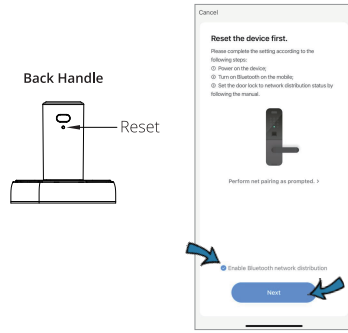
Smart App Operation

01: Add Device



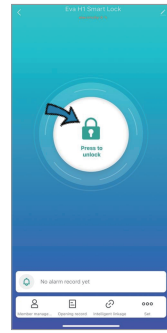
- After downloading app and login, start adding the lock by selecting the **+** icon at the upper right corner of Home page.
- Go to "Security & Video Surveillance" tab and select "Lock (BLE)".
- **Make sure your device's Bluetooth is ON.**

02: Prepare Lock for Pairing



- Prepare the lock for Bluetooth pairing, use a pin and press "reset" button **once** to enter pairing mode. (LED flashes in Blue)
- **Make sure your device's Bluetooth is ON.**
- Check the box on the screen and select "Next".
- Once added successfully, you can rename your Lock.

03: Bluetooth Unlocking (Close Range)

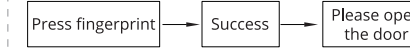


- Lock automatically sleeps after few seconds of inactivity.
- Enter the Lock device page, and touch the fingerprint reader on the lock to wake it.
- Once its connected, **HOLD** the center unlock icon to unlock.

Standalone Lock Operation

Demo Mode (Default)

The initial state of the lock will be in Default Factory Settings, which is on Demo Mode. Any fingerprint can unlock the door.



*Voice prompt:

Please open the door

Initial Fingerprint Registration (Admin)

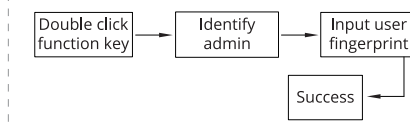
The first fingerprint that you register will be the administrator fingerprint by default. Any subsequent fingerprint registration requires admin authorization.



*Voice prompt:

Add administrator
Please press fingerprint | Press fingerprint | Succeed

User Registration

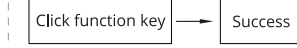


*Voice prompt:

Add user
Please identify administrator fingerprint | Succeed | Please press user fingerprint | Succeed

Passway Mode (Bypass)

In passway mode, the lock will always be unlocked and anyone can open the door.



*Voice prompt:

Passway mode is on / Passway mode is off

Mute Voice Prompt

Voice prompt will be muted during lock and unlock and LED light prompt will remain. Voice prompts for other operations will still be on.

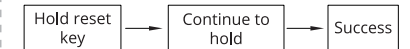


*Voice prompt:

Turn on/off mute mode

Restore Factory Settings

This action will erase all user and admin information from the lock memory and lock system will revert back to default demo mode.



*Voice prompt:

Keep Pressing | The data has been cleared | Succeed



More In-Depth Tutorials

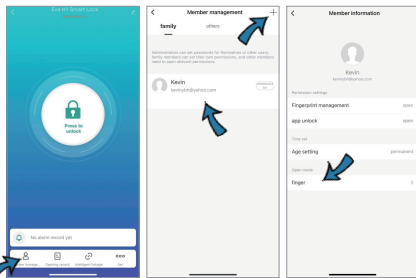
Scan the QR for more in-depth tutorials, tips and tricks, and video demo.



More In-Depth Tutorials

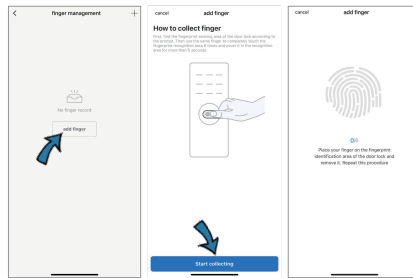
Scan the QR for more in-depth tutorials, tips and tricks, and video demo.

04: Member Management



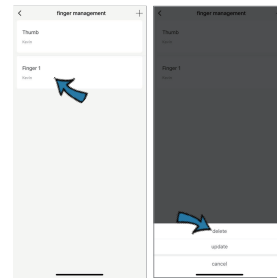
- At the Lock's main page, select "Member Management" icon on the lower left corner.
- All account users will be shown on "Member Management" page. Tap on the user to show "Member Information" page for more user info.
- Select "Finger" tab to add/delete user fingerprint.

05: Add Fingerprint



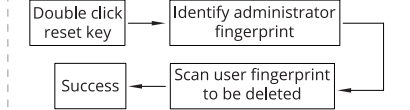
- The **FIRST** fingerprint registered into the system will be the **ADMIN** fingerprint by default. Any fingerprint that is manually added from the lock will need the ADMIN fingerprint authentication.
- Select "Start collecting" to start registering.
- Follow the on-screen instructions to add fingerprint.

06: Delete Fingerprint



- To delete a fingerprint, go into "Member Information" page from "Member Management".
- Select "Finger" tab to show all registered fingerprint for the specific user.
- Then select a fingerprint, and select "delete".

Delete User



*Voice prompt:

Please prepare the fingerprint to be deleted | Identify administrator fingerprint | Succeed | Press the fingerprint to be deleted

Warranty Disclaimer

All Eva Smart original product comes with **ONE (1) year** warranty from the date of purchase.

This warranty covers for:

- Factory defect such as product received in faulty or damaged condition.
- Electronic board malfunction under normal use.

During the warranty period, Eva Smart will attempt to repair or replace part of the product that is deemed to be damaged or faulty, with the use of refurbished or new parts, at no charge.

This warranty does not cover for:

- Damaged caused by improper installation by unauthorized 3rd party installers.
- User negligence and abusive use of product.
- Surface scratches or dents done intentionally or unintentionally.
- Tempered lock body / lock set.

Eva Smart reserves the right to make amendments or decline a warranty if product is found to be warranty voided after investigation.